

How to Use PurgeID's

by James Maeding

PurgeIDs is a program written to quickly clean unused Application ID's from an Autocad Drawing. It also cleans out layer filters.

Typically, you will discover a sheet has too many App ID's, and need to clean it and it's xrefs fast. PurgeIDs lets you do that conveniently, and shows the results of cleaning immediately.

PurgeIDs provides an interface to help discover what files are infected with excess App IDs, clean them, then review that they were indeed cleaned. Once the program files are in a support path, and the vlx is loaded, type PURGEIDS to run:

Step 1
Add Current Drawing or use other methods

Step 2
Find Xrefs for drawings

Step 3
Count App ID's

Step 4
Pick which files to purge
4000 is the recommended limit

Sort using any column headers

Note App ID count

Note file versions

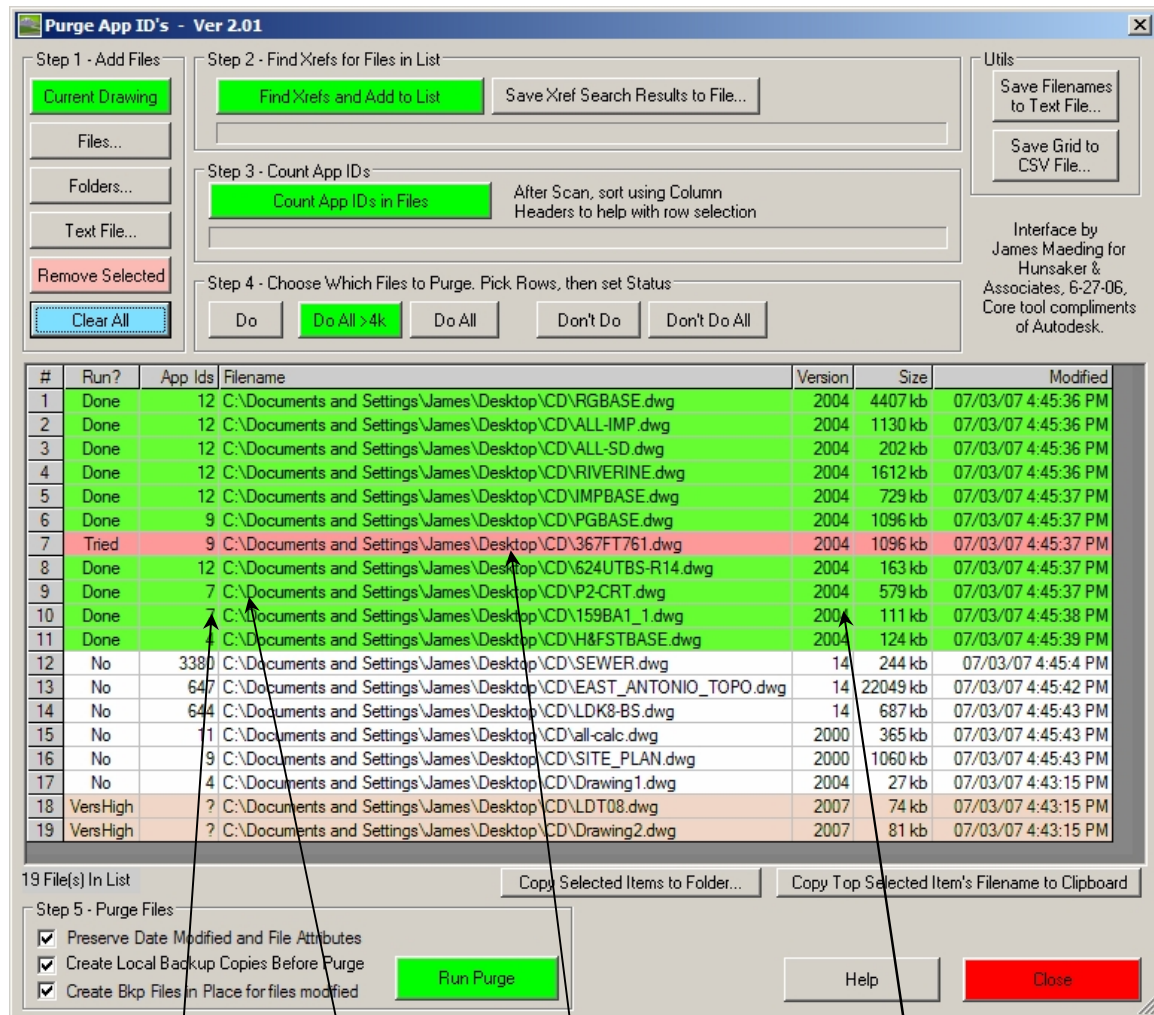
The make .bkp option makes a copy of every file purged, be careful to clean out later if used.

Step 5
Select backup options and Run

Table Data:

#	Run?	App Ids	Filename	Version	Size	Modified
1	Yes	28041	C:\Documents and Settings\James\Desktop\CD\RGBASE.dwg	2004	5386 kb	07/03/07 4:45:36 PM
2	Yes	28031	C:\Documents and Settings\James\Desktop\CD\ALL-IMP.dwg	2004	1667 kb	07/03/07 4:45:36 PM
3	Yes	28028	C:\Documents and Settings\James\Desktop\CD\ALL-SD.dwg	2000	1774 kb	07/03/07 4:45:36 PM
4	Yes	24352	C:\Documents and Settings\James\Desktop\CD\RIVERINE.dwg	2000	3502 kb	07/03/07 4:45:36 PM
5	Yes	9824	C:\Documents and Settings\James\Desktop\CD\IMPBASE.dwg	2000	1826 kb	07/03/07
6	Yes	9049	C:\Documents and Settings\James\Desktop\CD\PGBASE.dwg	2000	2893 kb	07/03/07
7	Yes	8642	C:\Documents and Settings\James\Desktop\CD\367FT761.dwg	14	1305 kb	07/03/07 4:45:37 PM
8	Yes	6096	C:\Documents and Settings\James\Desktop\CD\624UTBS-R14.dwg	14	516 kb	07/03/07 4:45:37 PM
9	Yes	5919	C:\Documents and Settings\James\Desktop\CD\P2-CRT.dwg	14	1261 kb	07/03/07 4:45:37 PM
10	Yes	5765	C:\Documents and Settings\James\Desktop\CD\159BA1_1.dwg	14	509 kb	07/03/07 4:45:38 PM
11	Yes	4231	C:\Documents and Settings\James\Desktop\CD\H&FSTBASE.dwg	14	373 kb	07/03/07 4:45:39 PM
12	No	3380	C:\Documents and Settings\James\Desktop\CD\SEWER.dwg	14	244 kb	07/03/07 4:45:4 PM
13	No	647	C:\Documents and Settings\James\Desktop\CD\EAST_ANTONIO_TOPO.dwg	14	22049 kb	07/03/07 4:45:42 PM
14	No	644	C:\Documents and Settings\James\Desktop\CD\LDK8-BS.dwg	14	627 kb	07/03/07 4:45:43 PM
15	No	11	C:\Documents and Settings\James\Desktop\CD\all-calc.dwg	2000	365 kb	07/03/07 4:45:43 PM
16	No	9	C:\Documents and Settings\James\Desktop\CD\SITE_PLAN.dwg	2000	1060 kb	07/03/07 4:45:43 PM
17	No	4	C:\Documents and Settings\James\Desktop\CD\Drawing1.dwg	2004	27 kb	07/03/07 4:43:15 PM
18	VersHigh	?	C:\Documents and Settings\James\Desktop\CD\LDTO8.dwg	2007	74 kb	07/03/07 4:43:15 PM
19	VersHigh	?	C:\Documents and Settings\James\Desktop\CD\Drawing2.dwg	2007	81 kb	07/03/07 4:43:15 PM

Check items when done:



App ID's now
down below
4000

Green Items
successfully
processed

Red Items could not
be cleaned. Files
were open or read-
only.

Note all files saved
in current version
now

The idea of the tool is to help you gather a list of files to process, then clean them, then show you if any were missed.

Be sure to use the column headers to sort the grid as desired. You can only select continuous blocks of rows, so that becomes important.

The tool is very helpful in determining where app ID's are entering a project, as you can see which ones are contaminated. The Folder... button will search for files recursively so you can select files in all subfolders of a project. It takes a while to scan hundreds of files for their App Id count, but it allows you to only purge files desired, not all of them every time as in the past.